



MILE SQUARE REGIONAL PARK MASTER PLAN

EIR Scoping Meeting – September 10, 2020



AGENDA

- Welcome and Introductions
- Project Background
- Purpose of CEQA and Scoping
- Environmental Review Process
- Mile Square Regional Park Design
- Public Input and Submitting Comments
- Next Steps
- Adjourn

WELCOME

Stacy Blackwood
Director



MILE SQUARE REGIONAL PARK MASTER PLAN

EIR Scoping Meeting – September 10, 2020



INTRODUCTIONS



Natalia Gaerlan
Sr Project Manager



Tanya Jones
Environmental Planning Manager

Jennifer Piggott
Facilitator

MILE SQUARE REGIONAL PARK MASTER PLAN

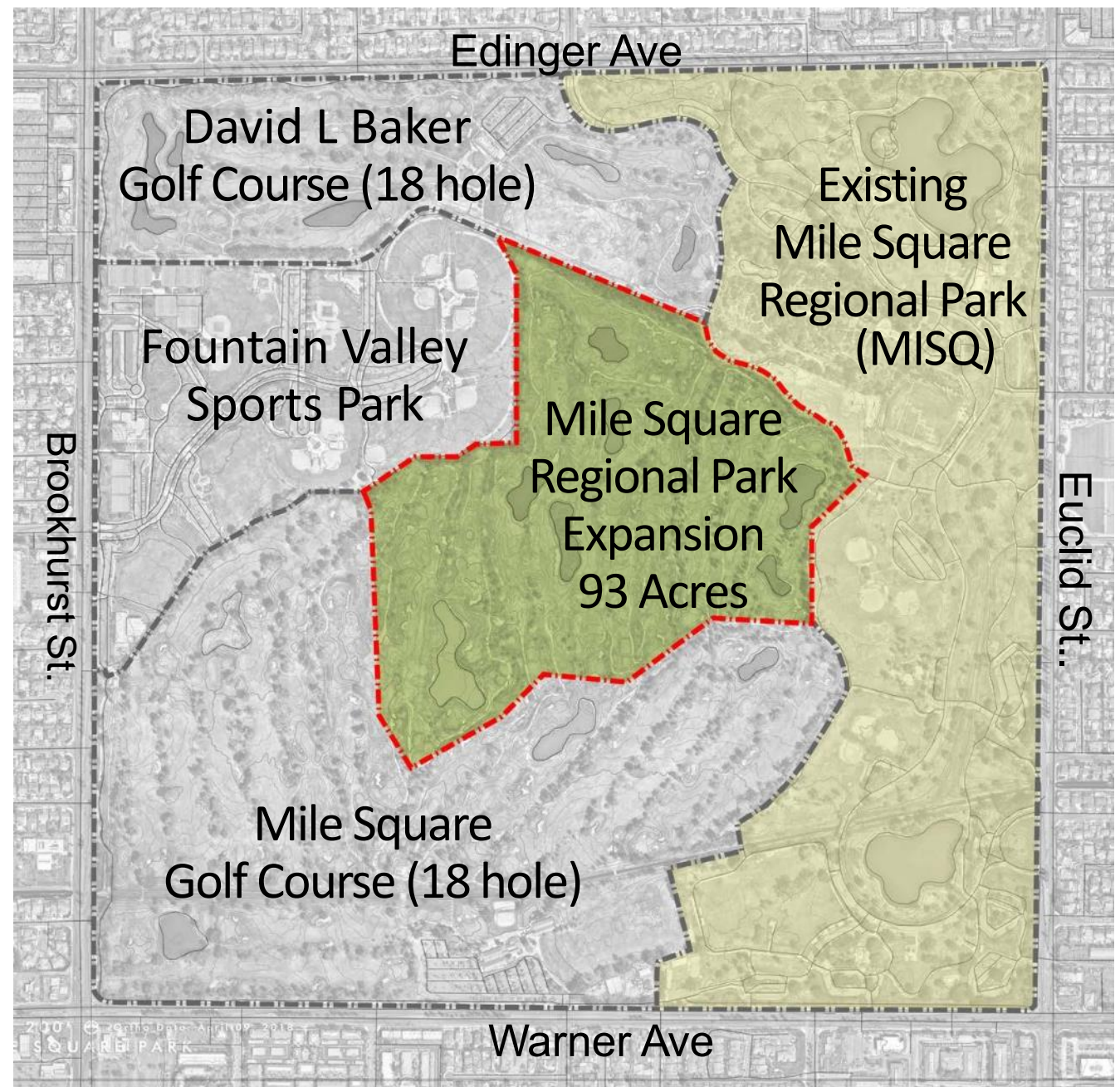
EIR Scoping Meeting – September 10, 2020



PROJECT BACKGROUND

Completed Milestones

- Research and Analysis (2018)
- Public Workshop and Outreach Events (Jan – Aug 2019)
 - Created two alternatives
- Public Open House (Aug 2019)
 - Selected draft final design
- Initiate CEQA EIR Process



Purpose of CEQA

The primary purposes of the California Environmental Quality Act (CEQA) are to:

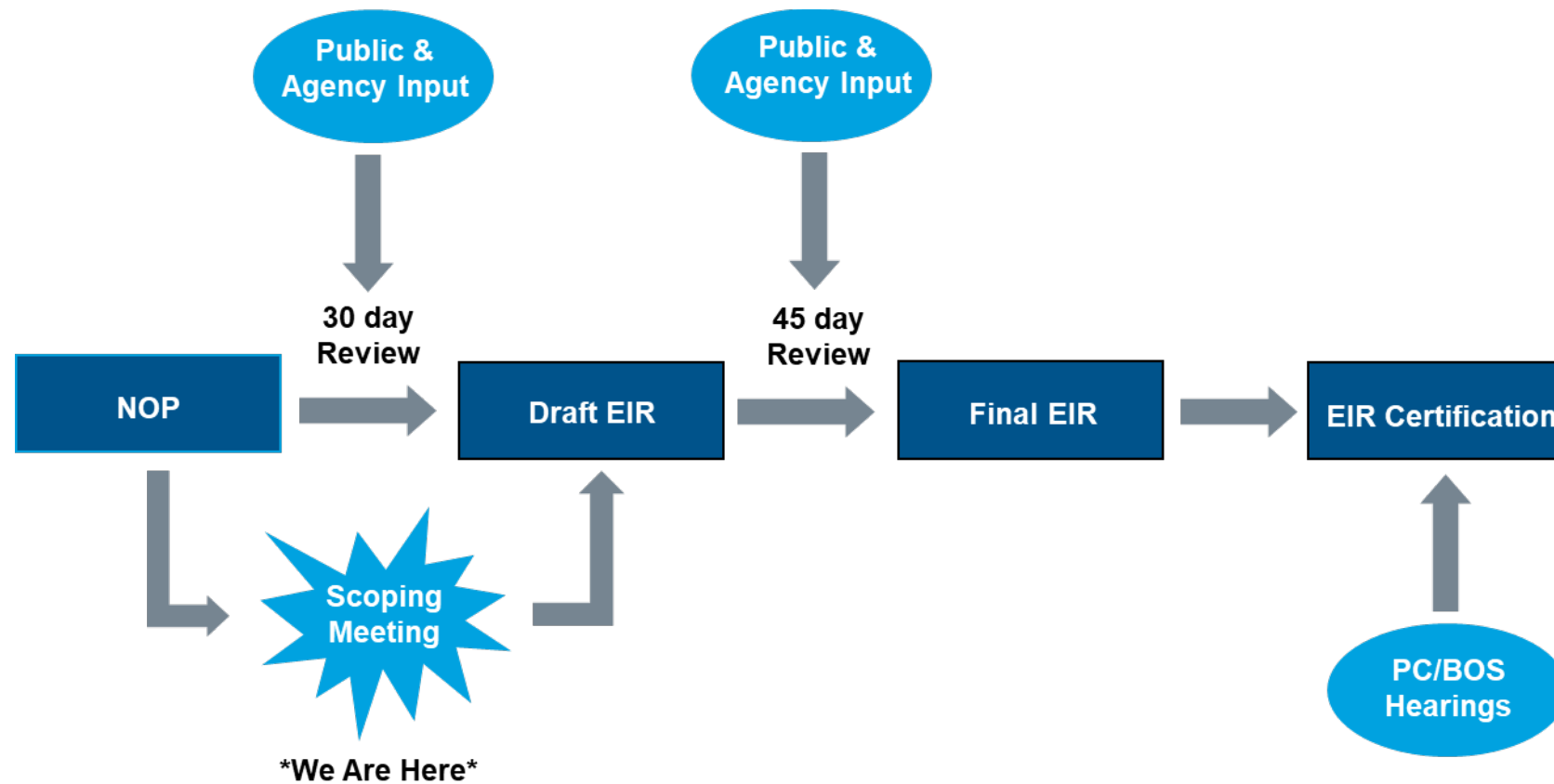
- Disclose potential environmental effects.
- Identify how to avoid or reduce impacts.
- Prevent environmental damage through mitigation or alternatives
- Foster interagency coordination in review of projects.
- Enhance public participation.

Purpose of Scoping

The primary purposes of Scoping are to:

- Notify the public that as lead agency under CEQA OC Parks will prepare an Environmental Impact Report (EIR) for the Mile Square Regional Park Master Plan.
- Provide information about the proposed Project.
- Identify potential environmental issues and alternatives to be analyzed in the EIR.
- Receive public input on the scope and content of the environmental issues to be studied.

CEQA ENVIRONMENTAL REVIEW PROCESS



MILE SQUARE REGIONAL PARK MASTER PLAN

EIR Scoping Meeting – September 10, 2020



Environmental Issues to be Addressed in the EIR

- **Aesthetics**
- **Air Quality**
- **Biological Resources**
- **Cultural Resources**
- **Energy**
- **Geology & Soils**
- **Greenhouse Gas Emissions**
- **Hazards & Hazardous Materials**
- **Hydrology & Water Quality**
- **Land Use & Planning**
- **Noise**
- **Public Services**
- **Recreation**
- **Transportation**
- **Tribal Cultural Resources**
- **Utilities & Service Systems**
- **Wildfire**
- **Alternatives**
- **Cumulative Impacts**

PUBLIC ENGAGEMENT

Workshops, Open House, Tabling, Surveys, Emails

- Public feedback
 - 5 events
 - collected 1,621 surveys
- Top choices for new amenities:
 - Walking Paths
 - Nature/Garden Areas
 - Picnic Areas
 - Lakes



EXPANSION IMPROVEMENTS



MILE SQUARE REGIONAL PARK MASTER PLAN

EIR Scoping Meeting – September 10, 2020



EXPANSION IMPROVEMENTS

Conceptual Master Plan

Legend

- ① The Great Meadow
- ② Multiuse Playfield
- ③ Civic Plaza
- ④ Adventure Play Area
- ⑤ Camp & Wilderness Area
- ⑥ 100 ft. Min. Tree Buffer
- ⑦ Shade Pavilion
- ⑧ Botanic Garden
- ⑨ Maintenance Yard and Storage
- ⑩ Phase 1 Perimeter Trail
- ⑪ Restrooms
- ⑫ Modified Pond
- ⑬ Visitor Center
- ⑭ Parking
- ⑮ Perimeter Screen Planting



MILE SQUARE REGIONAL PARK MASTER PLAN

EIR Scoping Meeting – September 10, 2020



EXPANSION IMPROVEMENTS

Shade Pavilion and Plaza

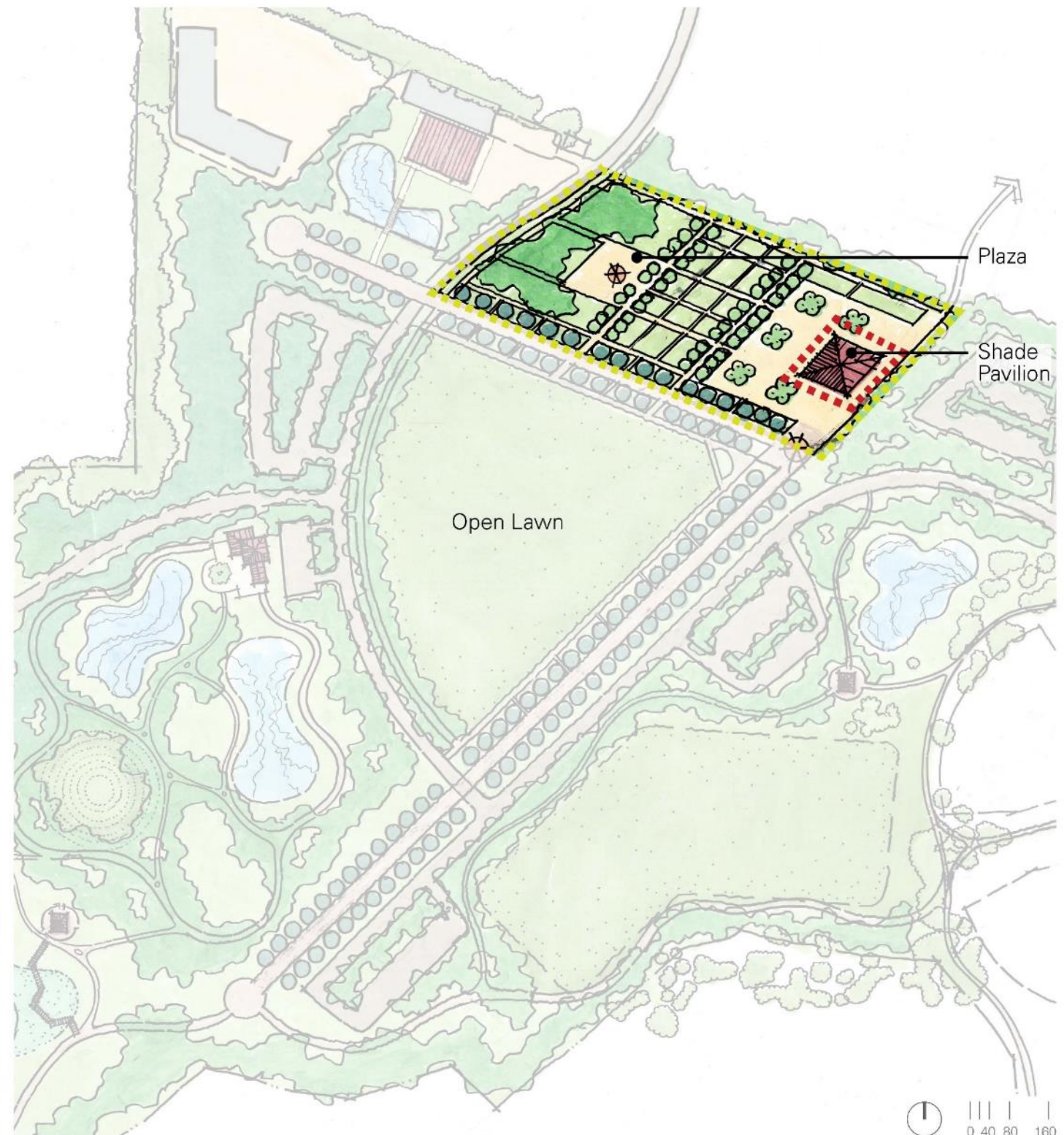
Potential Activities:

Shade Pavilion

- Art Exhibitions
- Educational/Historical Exhibitions
- Outdoor Yoga, Tai Chi, or Other Exercise
- Food Festival
- Small Concerts
- Health Expos

Plaza

- Farmers Market
- Graduation/Other Ceremonies
- Food Trucks
- Outdoor Dining



MILE SQUARE REGIONAL PARK MASTER PLAN

EIR Scoping Meeting – September 10, 2020



EXPANSION IMPROVEMENTS

Open Lawn and Terraced Amphitheater

Potential Activities:

■■■■■ Open Lawn

- Large Concerts, Summer Concerts or Events
- Car or Dog Show
- Drone Flying
- Model Airplane Flying
- Lawn Games

■■■■■ Terraced Amphitheater

- Smaller Concerts/Educational/Community Events
- Graduation/Public Ceremonies
- Corporate Events



EXPANSION IMPROVEMENTS

Botanic Garden and Nature Camp with Adventure Play

Potential Activities:

Botanic Garden

- Garden Tours
- Educational Planting Workshops
- Native Planting Events
- Monarch Butterfly Event
- Lookout Knoll at Center of Park

Nature Camp with Adventure Play

- Summer Camp
- Walking Trails Through Nature Areas
- Marsh/Lake Education Area
- Picnic Areas
- Large Playground with Opportunities for Creative Exploration and Connection to Nature
- Play Areas for Multiple Age Groups
- Group Campground



EXPANSION IMPROVEMENTS

Historical Promenade and Turf Fields

Potential Activities:

Historical Promenade

- Historical Elements/Plaques to Commemorate the History of Mile Square Park
- Farmers Markets
- Charity Walk/Events

Turf Fields

- Overflow Parking for Large Events
- Car or Dog Show/Event
- Farmers Market

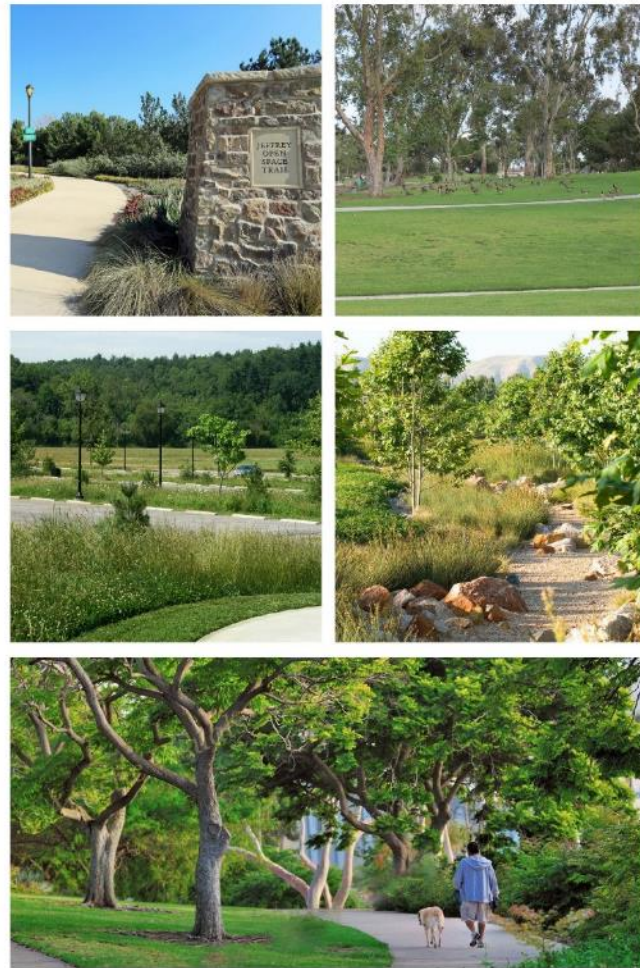


MISQ IMPROVEMENTS

Existing Regional Park Master Plan

Legend

- ① Proposed Egress Modifications
- ② Enhanced Entry Gates
- ③ Proposed Entry at Heil and Euclid
- ④ Enhanced Pedestrian Access
- ⑤ Enhanced Drainage Channel
- ⑥ Enhanced Perimeter Edge and Existing Trees
- ⑦ Storage



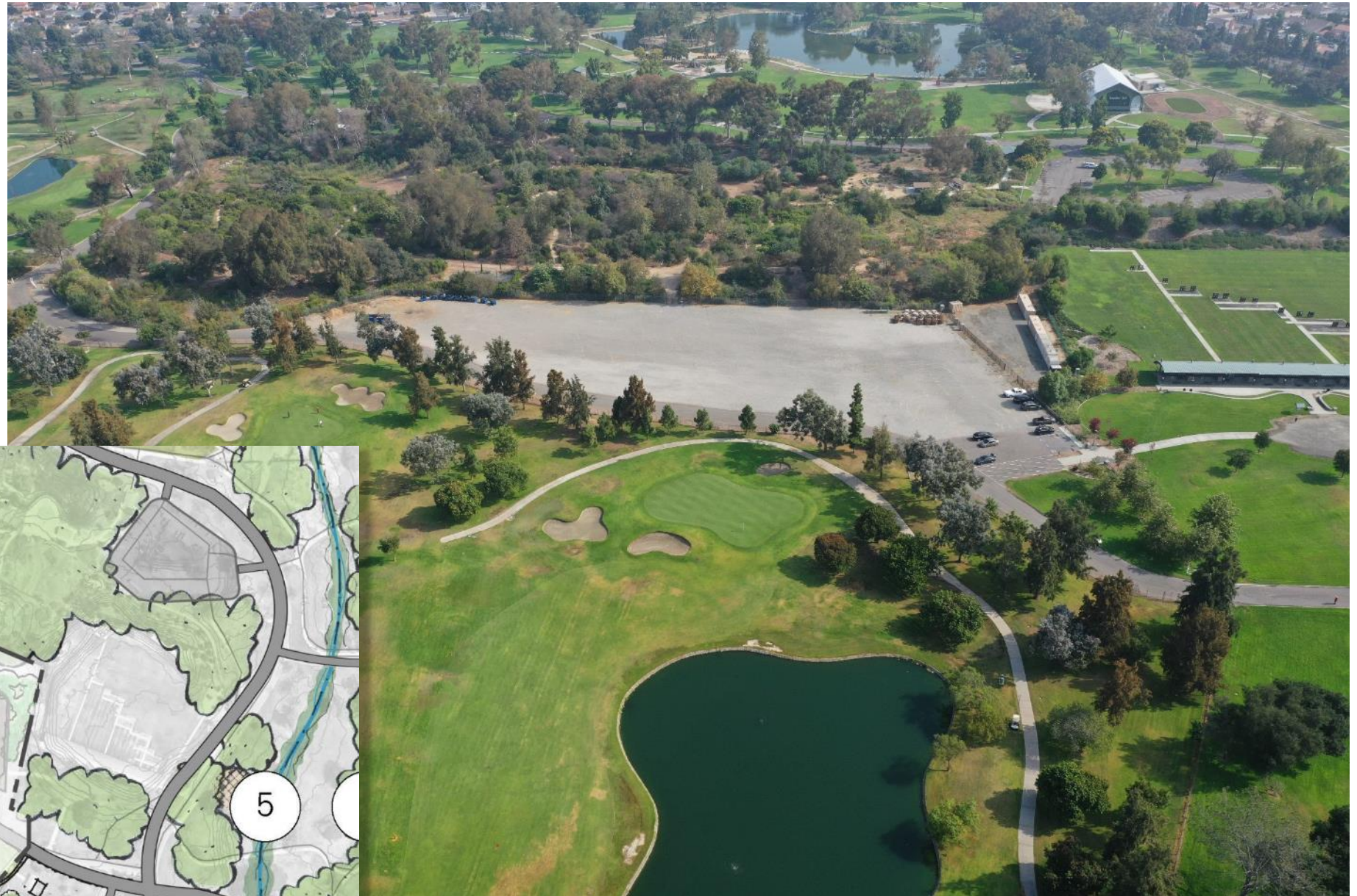
MILE SQUARE REGIONAL PARK MASTER PLAN

EIR Scoping Meeting – September 10, 2020



MISQ IMPROVEMENTS

Overflow Lot



Expansion Area

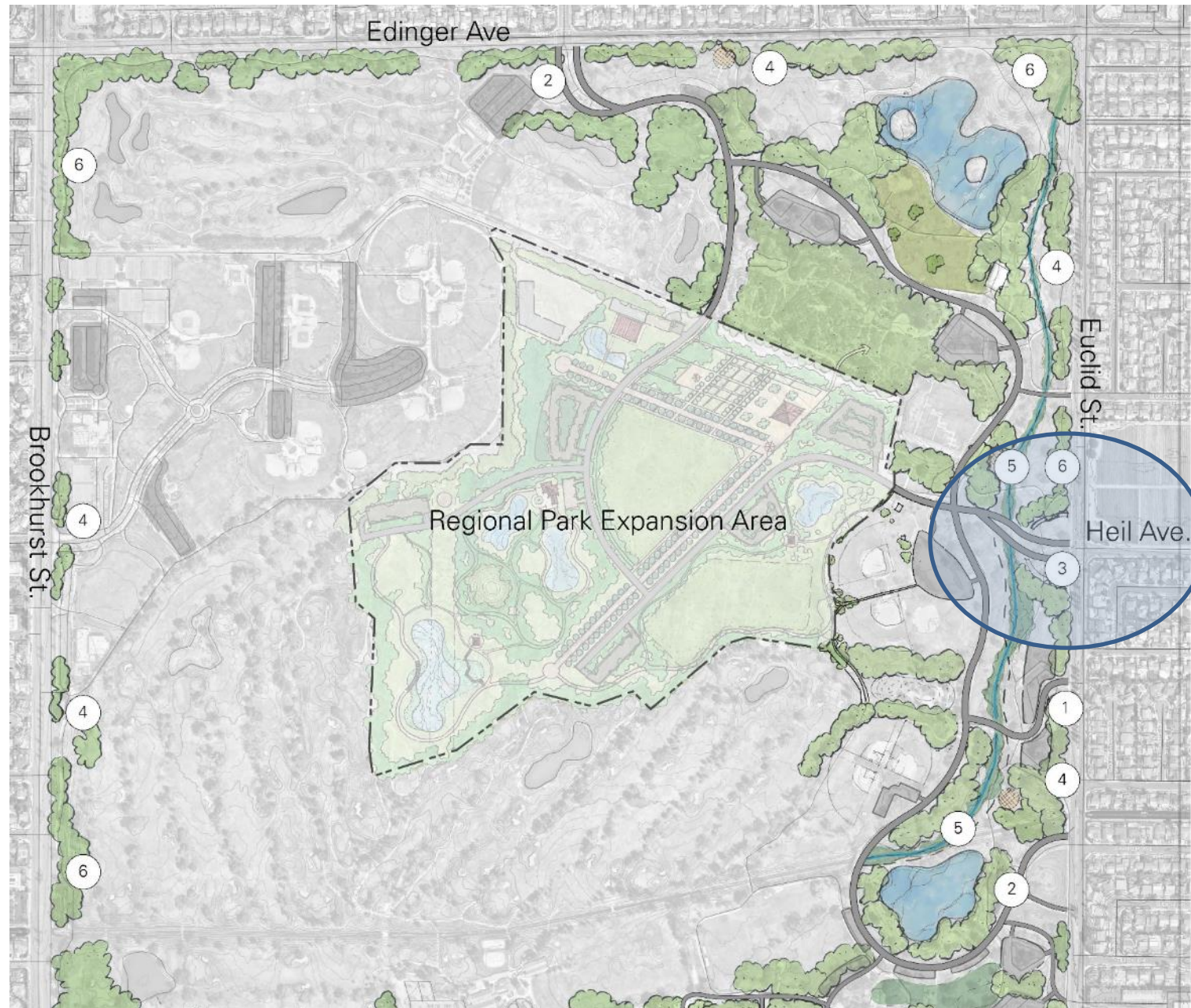
MISQ IMPROVEMENTS

Creek Channel



MISQ IMPROVEMENTS

New Park Entry with New Ranger Station



MILE SQUARE REGIONAL PARK MASTER PLAN

EIR Scoping Meeting – September 10, 2020



CIRCULATION

Vehicular Circulation and Parking

- Primary Vehicular
- Secondary Vehicular
- Vehicular Exit Only
- Vehicular and Pedestrian Entry/Exit
- Enhanced Vehicular and Pedestrian Entry/Exit
- Proposed Vehicular and Pedestrian Entry/Exit - Heil Ave. and Euclid St.
- Existing Parking
- Proposed Parking Lots
- Proposed Roadside Parking
- Proposed Overflow Parking

Parking Counts

Summary

On-Site - Proposed Parking Area	
Parking Lots.....	610
Roadside.....	65
Overflow.....	1,000

Total On-Site - Proposed.....1,675

Total On-Site Existing.....1,246

Total Parking.....2,728

Proposed Lots

Lot #	Quantity
1	176
2	98
3	50
4	24
5	56
6	191
7	15

Proposed Roadside

Zone	Quantity
A	20
B	45



MILE SQUARE REGIONAL PARK MASTER PLAN

EIR Scoping Meeting – September 10, 2020



MISQ IMPROVEMENTS

Other Improvements

- reforestation
- signage and wayfinding
- improved walking paths
- storage



MILE SQUARE REGIONAL PARK MASTER PLAN

EIR Scoping Meeting – September 10, 2020



How to submit comments:

- Answering general questions on the project overview and CEQA process at tonight's meeting

Option 1 - Email: milesquareexpansion@ocparks.com

Option 2 - Submit Comment Letter:

OC Parks/Planning & Design Division
13042 Old Myford Road
Irvine, CA 92602

Option 3 - Project Hotline: 855-697-3702

COMMENT PERIOD CLOSES – September 22, 2020

We'd Like
Your
Comments

MILE SQUARE REGIONAL PARK MASTER PLAN

EIR Scoping Meeting – September 10, 2020



Next Steps

The next steps in the EIR process involve:

- Evaluation of scoping comments.
- Completion of the Draft EIR.
- Publication of the Draft EIR.
- Distribution of the Draft EIR for a 45-Day Public Review.
- Preparation of Response to Comments and the Final EIR.
- Consideration of the Master Plan and EIR through public hearings before the OC Parks Commission & Board of Supervisors

PROJECT WEBPAGE

<https://www.ocparks.com/parks/mile/expansion>

The screenshot shows the OC Parks website interface. At the top, there is a navigation bar with the OC Parks logo, the OCgov.com logo, and a search bar. Below the navigation bar, there are several menu items: PARKS & TRAILS, BEACHES, HISTORIC SITES, OC ZOO, RESERVATIONS & PERMITS, ABOUT US, and HOW DO I. The main content area features a breadcrumb trail: OC Parks > Mile Square Regional Park > Expansion. On the left side, there is a sidebar with a list of links for Mile Square Regional Park, including Home, History, Park Rules, Park Amenities, Events & Programs, Archery Range, News, and Interactive Map. The main content area has a heading for Mile Square Regional Park Expansion, followed by a request for public input on the expansion. Below this, there is a section for a community meeting with details on the date, time, and location.

MILE SQUARE REGIONAL PARK

- » Mile Square Regional Park Home
- » History
- » Park Rules
- » Park Amenities
- » Events & Programs
- » Archery Range
- » News →
- » Interactive Map

POPULAR +

RESOURCES +

Mile Square Regional Park Expansion

Please help us plan the expansion of Mile Square Regional Park!

The County of Orange, OC Parks is seeking public input to help plan and design the 93-acre expansion to the regional park. Provide your thoughts on what you would like to see in the park addition.

Save the Date-- Upcoming Community Meeting

Postcard Invitation

Date: Wednesday, January 16, 2019

Time: 6:30 pm – 8:30 pm

Location: Freedom Hall, Mile Square Regional Park

For more information, please email milesquareexpansion@ocparks.com, or call (714) 973-6865.

MILE SQUARE REGIONAL PARK MASTER PLAN

EIR Scoping Meeting – September 10, 2020



How to submit comments:

- Answering general questions on the project overview and CEQA process at tonight's meeting

Option 1 - Email: milesquareexpansion@ocparks.com

Option 2 - Submit Comment Letter:

OC Parks/Planning & Design Division
13042 Old Myford Road
Irvine, CA 92602

Option 3 - Project Hotline: 855-697-3702

COMMENT PERIOD CLOSSES – September 22, 2020

We'd Like Your Comments

For more information,
visit the project webpage:

<https://www.ocparks.com/parks/mile/expansion>

MILE SQUARE REGIONAL PARK MASTER PLAN

EIR Scoping Meeting – September 10, 2020

