



Welcome



# Agenda

- Welcome and Introductions
- Project Overview
- Public Input
- Adjourn

Crawford Canyon Park

Public Outreach – January 16, 2020

 OC Public Works

 OC parks



# Project Background

## OC Board of Supervisors Actions

- **March 2011** – Board authorizes the search for a community park site in North Tustin
- **October 2011**- County acquires parcel
- **September 2016** - County authorizes use of North Tustin Landscape & Lighting District (Fund 459) for park development & maintenance
- **August 2018** - Clearwater at North Tustin Development Agreement approved with Public Benefit Clause for passive local park: Two Options:
  - 1) Developer designs and builds park
  - 2) Developer pays \$850,000 to County to build park
- **November 2018** – First Community Workshop
- **June 2019** - Clearwater at N. Tustin Developer elects to pay \$850,000 to County to build park

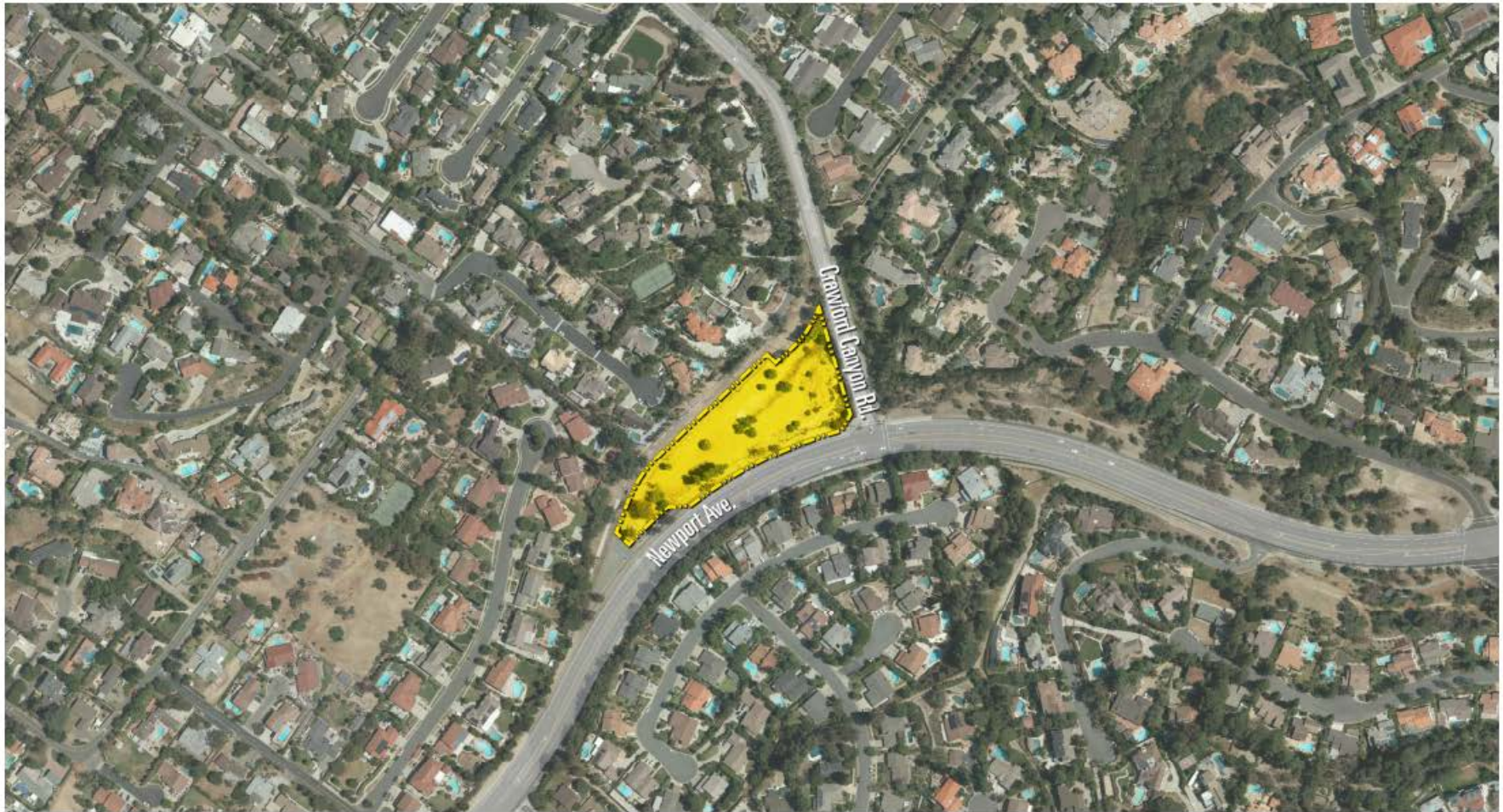
**Crawford Canyon Park**

Public Outreach – January 16, 2020

OC PublicWorks



# Project Location



**Crawford Canyon Park**  
Public Outreach — January 16, 2020



# Park Site Analysis:



**Crawford Canyon Park**  
Public Outreach — January 16, 2020



# Park Site Analysis:



**Crawford Canyon Park**

Public Outreach — January 16, 2020

OC PublicWorks



# Public Comments (Online Survey):

Of the priorities checked above, which one is your top priority?



**Crawford Canyon Park**

Public Outreach – January 16, 2020

 PublicWorks

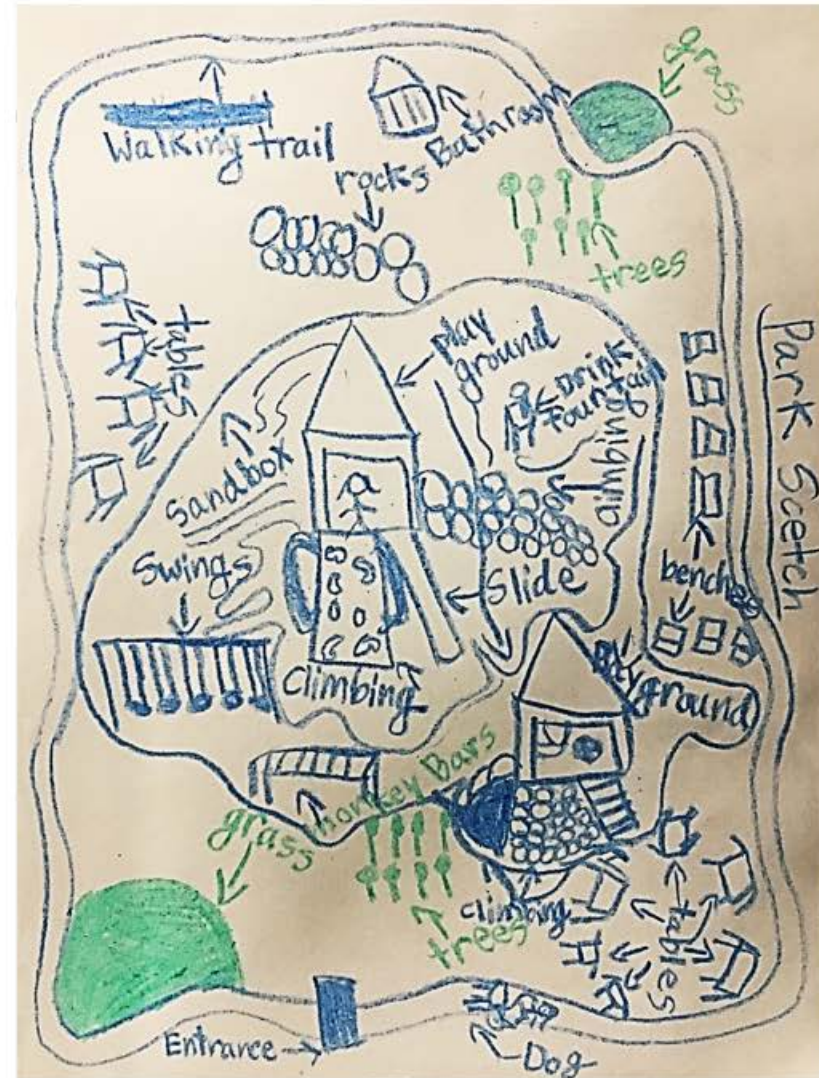
 parks



# Public Outreach

## Community Preferences

- Natural concept
- Trees & Landscaping
- Walkways
- Playground
- Exercise Equipment
- Picnic tables
- Benches
- Drinking fountain
- Security Lighting
- Parking
- Restroom



Crawford Canyon Park

Public Outreach — January 16, 2020

OC PublicWorks





# Park Design Goals:

**Accessibility-** reachable to residents of N. Tustin area  
Linkage to surrounding walkways, bikeways and trails

**Recreation-** serve the recreational needs of the community

**Safe and Sustainable Design** – provide safe and healthy environment;  
Eco-friendly materials and low maintenance

**Improve aesthetics** – beautify the site

**Crawford Canyon Park**

Public Outreach – January 16, 2020

 OC Public Works

 OC parks



# Design Considerations:

**Safety-** Maintain law enforcement surveillance views into site



**Crawford Canyon Park**  
Public Outreach — January 16, 2020



# Design Considerations:

**Accessibility-** gap in pedestrian sidewalk to park site along Crawford Canyon Road



**Crawford Canyon Park**

Public Outreach — January 16, 2020

OC PublicWorks

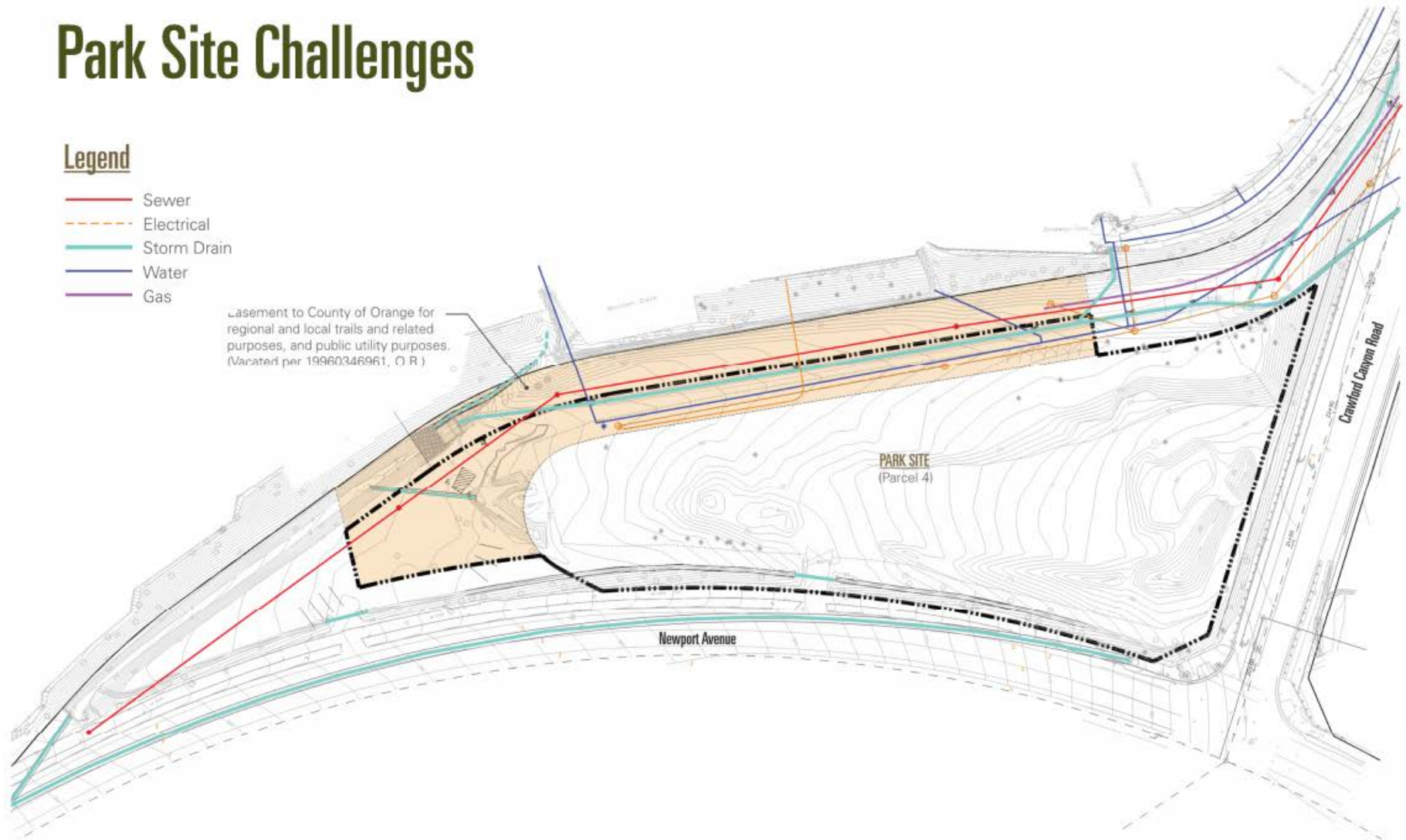


# Park Site Challenges

## Legend

- Sewer
- Electrical
- Storm Drain
- Water
- Gas

Easement to County of Orange for regional and local trails and related purposes, and public utility purposes. (Vacated per 19960346961, O.R.)



Crawford Canyon Park

Public Outreach — January 16, 2020

OC PublicWorks



# Preferred Park Concept

“Back to Nature” Concept Design  
Landscape Elements



## Crawford Canyon Park

Public Outreach — January 16, 2020



# Park Schematic Plan

“Back to Nature” Concept Design  
Playground and Exercise Equipment



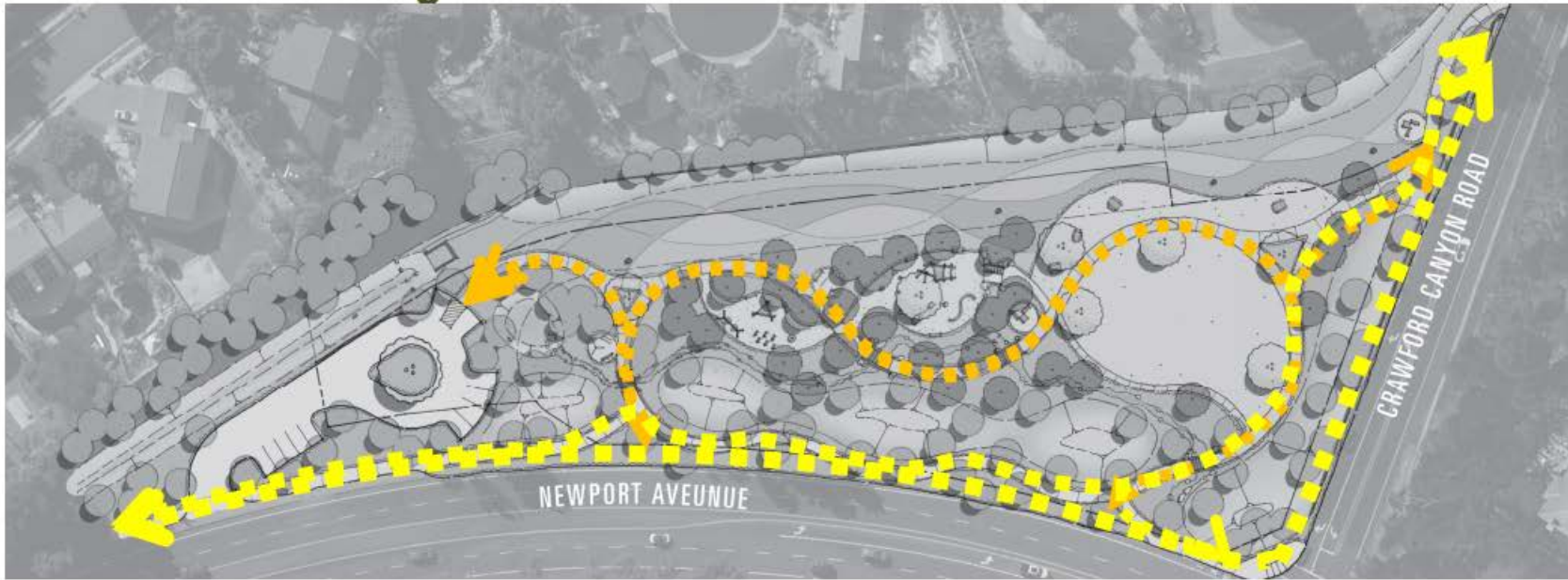
**Crawford Canyon Park**

Public Outreach — January 16, 2020

OC PublicWorks



# Circulation Through The Park



**Crawford Canyon Park**

Public Outreach — January 16, 2020

OC PublicWorks







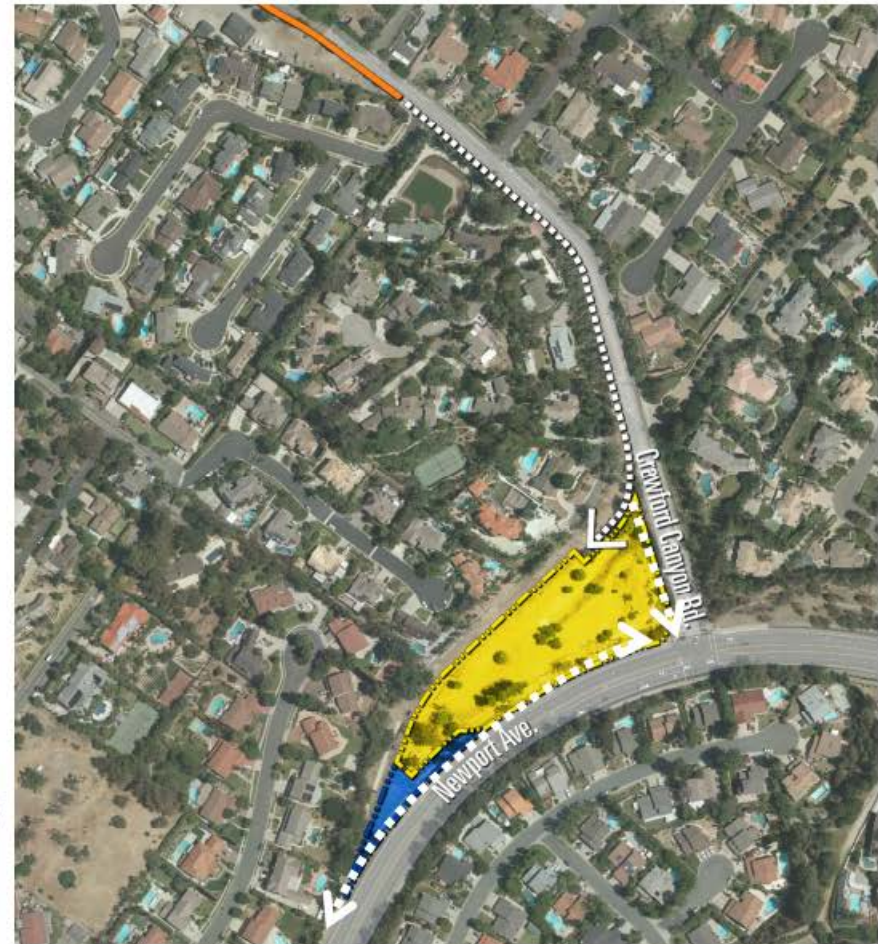
# Pedestrian Access to the Park

**Accessibility-** gap in pedestrian sidewalk to park site along the west side of Crawford Canyon Road

Improve the existing walkway along Newport Avenue

Potentially provide access along east side of Crawford Canyon Road

- Legend
-  Crawford Canyon Park Boundary
  -  Potential Parking for Park
  -  Existing Sidewalk
  -  Proposed Sidewalk Connection



**Crawford Canyon Park**

Public Outreach — January 16, 2020

 OC PublicWorks

 OC parks





# Pedestrian Access – Existing Conditions



Legend



Existing Sidewalk



Panorama Elementary School



Park Project Area

## Crawford Canyon Park

Public Outreach – January 16, 2020

OC PublicWorks



# Pedestrian Access – Minimal Improvements



**Legend**

	Existing Sidewalk		Panorama Elementary School		Park Project Area
	Minimal Improvements				

**Crawford Canyon Park**

Public Outreach – January 16, 2020

 OC PublicWorks

 OC parks



# Pedestrian Access – Optional Improvements



## Legend

-  Existing Sidewalk
-  Optional Improvements
-  Existing Crosswalk
-  Panorama Elementary School
-  Park Project Area

**Crawford Canyon Park**

Public Outreach – January 16, 2020

 OC PublicWorks

 OC parks



# Next Steps

## Project Implementation Process

- 1) Development of CEQA Document
- 2) Construction Documentation and Plan Check
- 3) Bid and Construction



**Crawford Canyon Park**

Public Outreach – January 16, 2020

OC PublicWorks



# Project Information

Website

[www.ocparks.com](http://www.ocparks.com)

OC Parks Headquarters

(714) 973-6865

Crawford Canyon Park

Public Outreach – January 16, 2020

 OC Public Works

 OC parks



# Additional ways you can participate:

Email Comments to:  
[CrawfordCanyonPark@ocparks.com](mailto:CrawfordCanyonPark@ocparks.com)

Fill out a comment card

US Mail Comments to:  
Crawford Canyon Park  
13042 Old Myford Road  
Irvine, Ca 92602

Crawford Canyon Park

Public Outreach — January 16, 2020

 OC Public Works

 parks



**Thank you for  
coming!**



## Neighborhood Park:

A **neighborhood park** is a general use local park developed to serve the active recreational needs of a particular neighborhood within a community.

Typically, neighborhood parks have a service area radius of one-half mile and are within walking or bicycling distance of park patrons. (Source: *Recreation Element of the Orange County General Plan, page VII-10.*)

Crawford Canyon Park

Public Outreach – January 16, 2020

OC PublicWorks

OC  
parks





# Donald Wagner

Supervisor 3<sup>rd</sup> District



County of Orange  
Board of Supervisors



**Crawford Canyon Park**

Public Outreach — January 16, 2020

 OC PublicWorks

 OC parks

